



# Demographic and Income Comparison Profile

Greeley Mall  
Rings: 5, 7, 10 mile radii

Latitude: 40.38942  
Longitude: -104.71531

	5 miles	7 miles	10 miles
<b>Census 2010 Summary</b>			
Population	116,924	121,090	137,007
Households	41,761	43,272	48,882
Families	27,062	28,224	32,594
Average Household Size	2.68	2.69	2.70
Owner Occupied Housing Units	24,103	25,259	29,525
Renter Occupied Housing Units	17,658	18,013	19,357
Median Age	29.8	30.1	30.7
<b>2014 Summary</b>			
Population	121,485	126,102	142,635
Households	43,479	45,161	51,005
Families	27,879	29,165	33,694
Average Household Size	2.68	2.69	2.70
Owner Occupied Housing Units	23,357	24,594	28,825
Renter Occupied Housing Units	20,122	20,567	22,180
Median Age	30.4	30.7	31.2
Median Household Income	\$41,797	\$42,587	\$44,672
Average Household Income	\$55,698	\$56,924	\$59,007
<b>2019 Summary</b>			
Population	127,664	132,794	150,564
Households	45,950	47,824	54,141
Families	29,161	30,586	35,458
Average Household Size	2.67	2.68	2.69
Owner Occupied Housing Units	24,335	25,712	30,259
Renter Occupied Housing Units	21,615	22,112	23,882
Median Age	31.5	31.8	32.2
Median Household Income	\$48,435	\$49,731	\$51,930
Average Household Income	\$64,173	\$65,775	\$67,986
<b>Trends: 2014-2019 Annual Rate</b>			
Population	1.00%	1.04%	1.09%
Households	1.11%	1.15%	1.20%
Families	0.90%	0.96%	1.03%
Owner Households	0.82%	0.89%	0.98%
Median Household Income	2.99%	3.15%	3.06%

Source: U.S. Census Bureau, Census 2010 Summary File 1. Esri forecasts for 2014 and 2019.



# Demographic and Income Comparison Profile

Greeley Mall  
Rings: 5, 7, 10 mile radii

Latitude: 40.38942  
Longitude: -104.71531

2014 Households by Income	5 miles		7 miles		10 miles	
	Number	Percent	Number	Percent	Number	Percent
<\$15,000	7,607	17.5%	7,740	17.1%	8,217	16.1%
\$15,000 - \$24,999	5,257	12.1%	5,371	11.9%	5,748	11.3%
\$25,000 - \$34,999	4,999	11.5%	5,128	11.4%	5,631	11.0%
\$35,000 - \$49,999	7,195	16.5%	7,366	16.3%	8,244	16.2%
\$50,000 - \$74,999	7,688	17.7%	8,026	17.8%	9,341	18.3%
\$75,000 - \$99,999	4,719	10.9%	4,959	11.0%	5,921	11.6%
\$100,000 - \$149,999	4,377	10.1%	4,734	10.5%	5,730	11.2%
\$150,000 - \$199,999	830	1.9%	937	2.1%	1,097	2.2%
\$200,000+	806	1.9%	899	2.0%	1,074	2.1%
Median Household Income	\$41,797		\$42,587		\$44,672	
Average Household Income	\$55,698		\$56,924		\$59,007	
Per Capita Income	\$20,605		\$21,072		\$21,698	

2019 Households by Income	5 miles		7 miles		10 miles	
	Number	Percent	Number	Percent	Number	Percent
<\$15,000	7,800	17.0%	7,921	16.6%	8,361	15.4%
\$15,000 - \$24,999	4,274	9.3%	4,358	9.1%	4,639	8.6%
\$25,000 - \$34,999	4,173	9.1%	4,270	8.9%	4,647	8.6%
\$35,000 - \$49,999	7,298	15.9%	7,460	15.6%	8,290	15.3%
\$50,000 - \$74,999	8,294	18.1%	8,647	18.1%	10,022	18.5%
\$75,000 - \$99,999	6,031	13.1%	6,336	13.2%	7,580	14.0%
\$100,000 - \$149,999	5,535	12.0%	5,971	12.5%	7,286	13.5%
\$150,000 - \$199,999	1,303	2.8%	1,467	3.1%	1,698	3.1%
\$200,000+	1,241	2.7%	1,391	2.9%	1,618	3.0%
Median Household Income	\$48,435		\$49,731		\$51,930	
Average Household Income	\$64,173		\$65,775		\$67,986	
Per Capita Income	\$23,897		\$24,503		\$25,151	

**Data Note:** Income is expressed in current dollars.

**Source:** U.S. Census Bureau, Census 2010 Summary File 1. Esri forecasts for 2014 and 2019.



# Demographic and Income Comparison Profile

Greeley Mall  
Rings: 5, 7, 10 mile radii

Latitude: 40.38942  
Longitude: -104.71531

	5 miles		7 miles		10 miles	
<b>2010 Population by Age</b>	<b>Number</b>	<b>Percent</b>	<b>Number</b>	<b>Percent</b>	<b>Number</b>	<b>Percent</b>
Age 0 - 4	9,267	7.9%	9,543	7.9%	10,722	7.8%
Age 5 - 9	8,956	7.7%	9,250	7.6%	10,656	7.8%
Age 10 - 14	7,990	6.8%	8,283	6.8%	9,625	7.0%
Age 15 - 19	10,713	9.2%	10,988	9.1%	12,242	8.9%
Age 20 - 24	12,903	11.0%	13,100	10.8%	13,874	10.1%
Age 25 - 34	16,652	14.2%	17,169	14.2%	19,306	14.1%
Age 35 - 44	13,927	11.9%	14,483	12.0%	16,755	12.2%
Age 45 - 54	13,388	11.5%	14,009	11.6%	16,296	11.9%
Age 55 - 64	11,222	9.6%	11,846	9.8%	13,547	9.9%
Age 65 - 74	6,227	5.3%	6,532	5.4%	7,445	5.4%
Age 75 - 84	3,916	3.3%	4,067	3.4%	4,543	3.3%
Age 85+	1,763	1.5%	1,820	1.5%	1,994	1.5%

	5 miles		7 miles		10 miles	
<b>2014 Population by Age</b>	<b>Number</b>	<b>Percent</b>	<b>Number</b>	<b>Percent</b>	<b>Number</b>	<b>Percent</b>
Age 0 - 4	9,389	7.7%	9,685	7.7%	10,891	7.6%
Age 5 - 9	8,860	7.3%	9,181	7.3%	10,431	7.3%
Age 10 - 14	8,531	7.0%	8,865	7.0%	10,299	7.2%
Age 15 - 19	10,412	8.6%	10,694	8.5%	11,894	8.3%
Age 20 - 24	12,628	10.4%	12,852	10.2%	13,892	9.7%
Age 25 - 34	18,710	15.4%	19,260	15.3%	21,362	15.0%
Age 35 - 44	14,252	11.7%	14,878	11.8%	17,230	12.1%
Age 45 - 54	13,018	10.7%	13,645	10.8%	15,824	11.1%
Age 55 - 64	12,136	10.0%	12,832	10.2%	14,799	10.4%
Age 65 - 74	7,613	6.3%	8,038	6.4%	9,163	6.4%
Age 75 - 84	4,030	3.3%	4,202	3.3%	4,692	3.3%
Age 85+	1,907	1.6%	1,971	1.6%	2,160	1.5%

	5 miles		7 miles		10 miles	
<b>2019 Population by Age</b>	<b>Number</b>	<b>Percent</b>	<b>Number</b>	<b>Percent</b>	<b>Number</b>	<b>Percent</b>
Age 0 - 4	10,022	7.9%	10,361	7.8%	11,704	7.8%
Age 5 - 9	9,117	7.1%	9,474	7.1%	10,790	7.2%
Age 10 - 14	8,702	6.8%	9,090	6.8%	10,477	7.0%
Age 15 - 19	11,056	8.7%	11,377	8.6%	12,705	8.4%
Age 20 - 24	11,937	9.4%	12,151	9.2%	13,153	8.7%
Age 25 - 34	19,967	15.6%	20,521	15.5%	22,877	15.2%
Age 35 - 44	15,448	12.1%	16,201	12.2%	18,733	12.4%
Age 45 - 54	12,877	10.1%	13,539	10.2%	15,719	10.4%
Age 55 - 64	12,454	9.8%	13,147	9.9%	15,248	10.1%
Age 65 - 74	9,390	7.4%	9,956	7.5%	11,393	7.6%
Age 75 - 84	4,630	3.6%	4,842	3.6%	5,434	3.6%
Age 85+	2,065	1.6%	2,136	1.6%	2,331	1.5%

Source: U.S. Census Bureau, Census 2010 Summary File 1. Esri forecasts for 2014 and 2019.



# Demographic and Income Comparison Profile

Greeley Mall  
Rings: 5, 7, 10 mile radii

Latitude: 40.38942  
Longitude: -104.71531

2010 Race and Ethnicity	5 miles		7 miles		10 miles	
	Number	Percent	Number	Percent	Number	Percent
White Alone	91,836	78.5%	95,617	79.0%	109,405	79.9%
Black Alone	1,728	1.5%	1,744	1.4%	1,797	1.3%
American Indian Alone	1,411	1.2%	1,436	1.2%	1,547	1.1%
Asian Alone	1,417	1.2%	1,454	1.2%	1,551	1.1%
Pacific Islander Alone	128	0.1%	130	0.1%	133	0.1%
Some Other Race Alone	16,562	14.2%	16,777	13.9%	18,283	13.3%
Two or More Races	3,842	3.3%	3,932	3.2%	4,290	3.1%
Hispanic Origin (Any Race)	44,099	37.7%	44,882	37.1%	48,715	35.6%

2014 Race and Ethnicity	5 miles		7 miles		10 miles	
	Number	Percent	Number	Percent	Number	Percent
White Alone	93,834	77.2%	97,986	77.7%	112,195	78.7%
Black Alone	2,245	1.8%	2,269	1.8%	2,335	1.6%
American Indian Alone	1,509	1.2%	1,537	1.2%	1,654	1.2%
Asian Alone	1,814	1.5%	1,869	1.5%	1,994	1.4%
Pacific Islander Alone	164	0.1%	168	0.1%	172	0.1%
Some Other Race Alone	17,706	14.6%	17,950	14.2%	19,560	13.7%
Two or More Races	4,212	3.5%	4,323	3.4%	4,725	3.3%
Hispanic Origin (Any Race)	46,718	38.5%	47,597	37.7%	51,686	36.2%

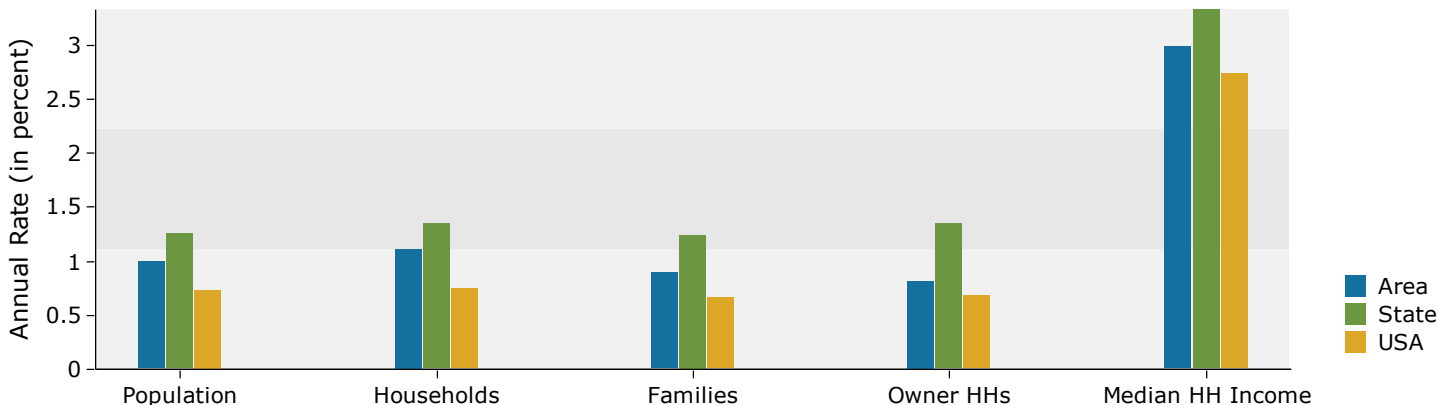
  

2019 Race and Ethnicity	5 miles		7 miles		10 miles	
	Number	Percent	Number	Percent	Number	Percent
White Alone	96,900	75.9%	101,463	76.4%	116,594	77.4%
Black Alone	3,022	2.4%	3,058	2.3%	3,151	2.1%
American Indian Alone	1,619	1.3%	1,651	1.2%	1,778	1.2%
Asian Alone	2,348	1.8%	2,425	1.8%	2,592	1.7%
Pacific Islander Alone	197	0.2%	202	0.2%	206	0.1%
Some Other Race Alone	18,872	14.8%	19,150	14.4%	20,923	13.9%
Two or More Races	4,706	3.7%	4,845	3.6%	5,319	3.5%
Hispanic Origin (Any Race)	50,915	39.9%	51,952	39.1%	56,596	37.6%

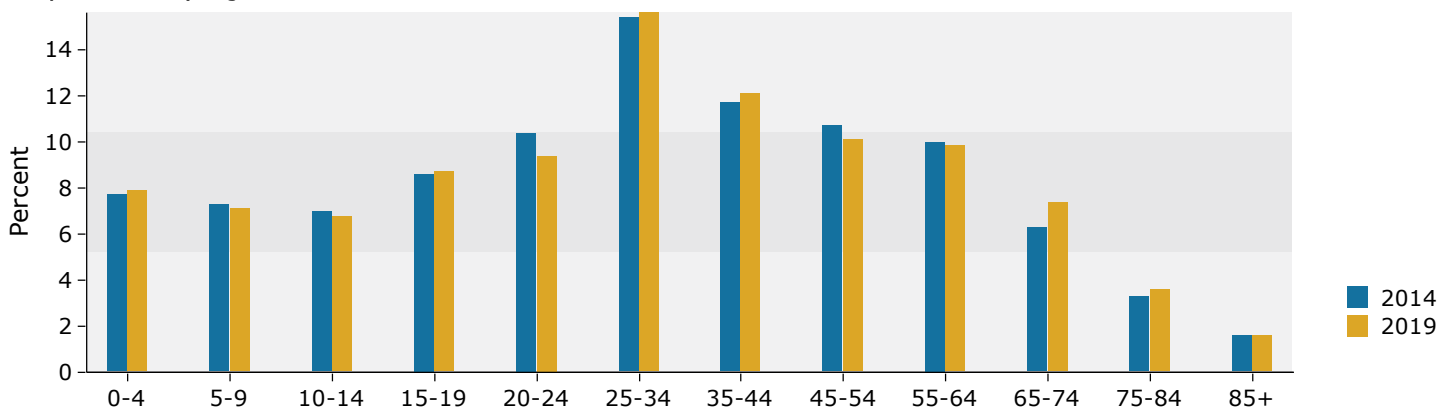
Source: U.S. Census Bureau, Census 2010 Summary File 1. Esri forecasts for 2014 and 2019.

## 5 miles

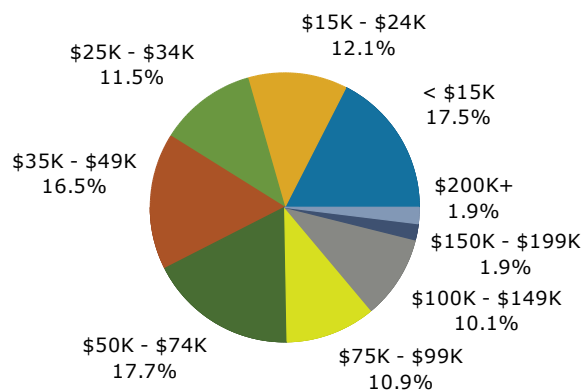
### Trends 2014-2019



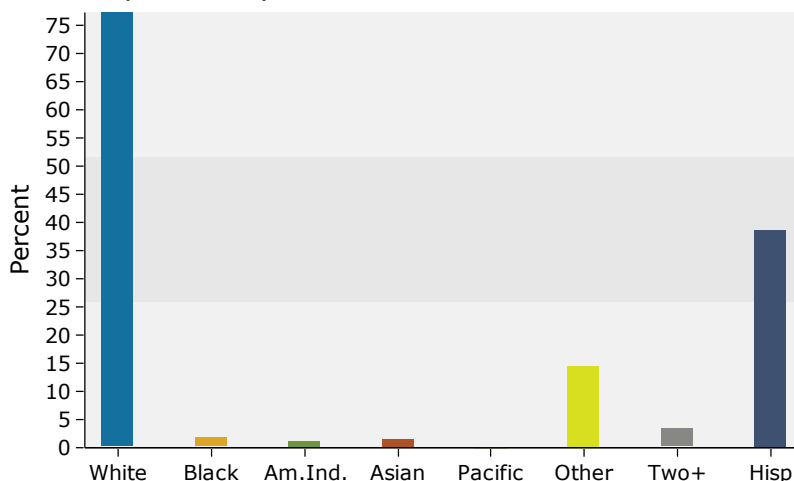
### Population by Age



### 2014 Household Income



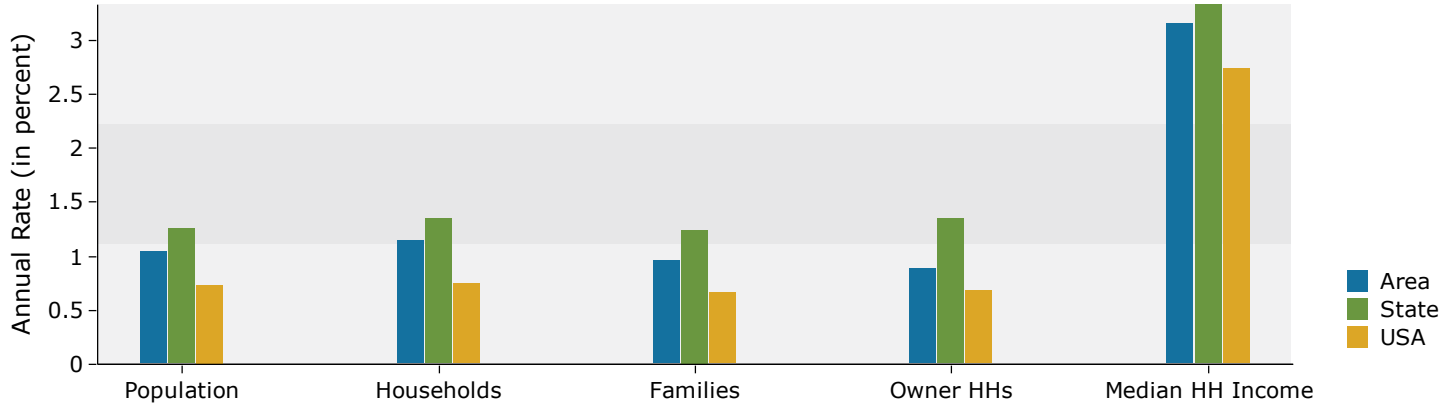
### 2014 Population by Race



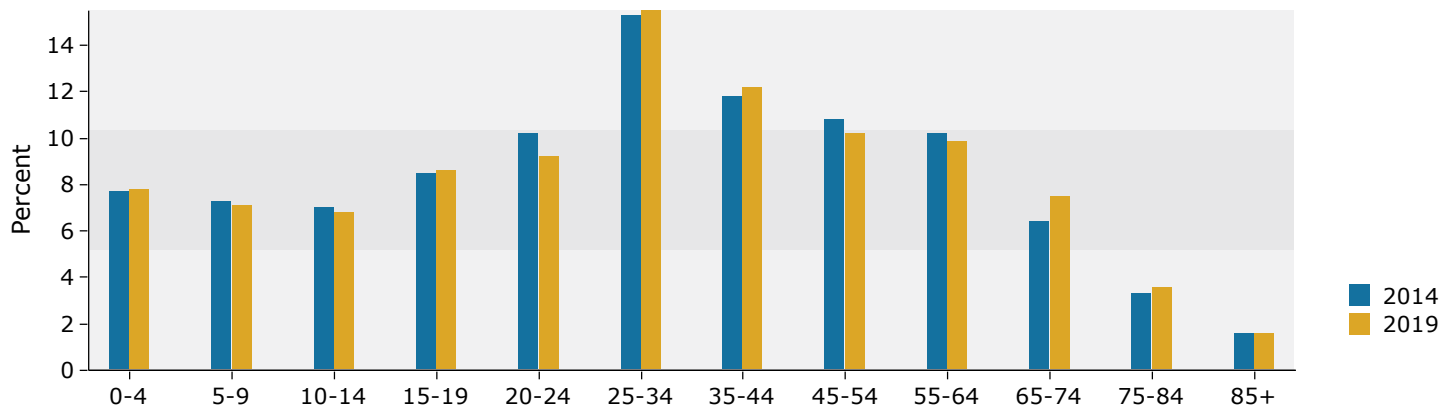
Source: U.S. Census Bureau, Census 2010 Summary File 1. Esri forecasts for 2014 and 2019.

## 7 miles

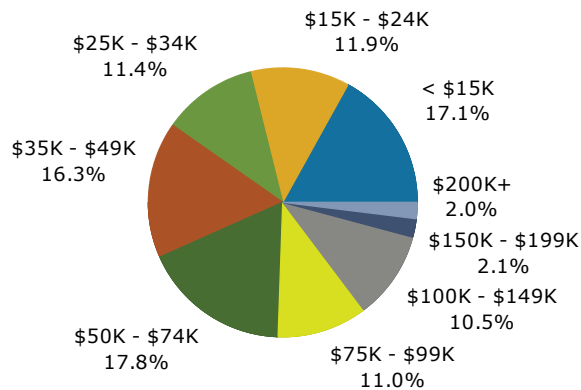
### Trends 2014-2019



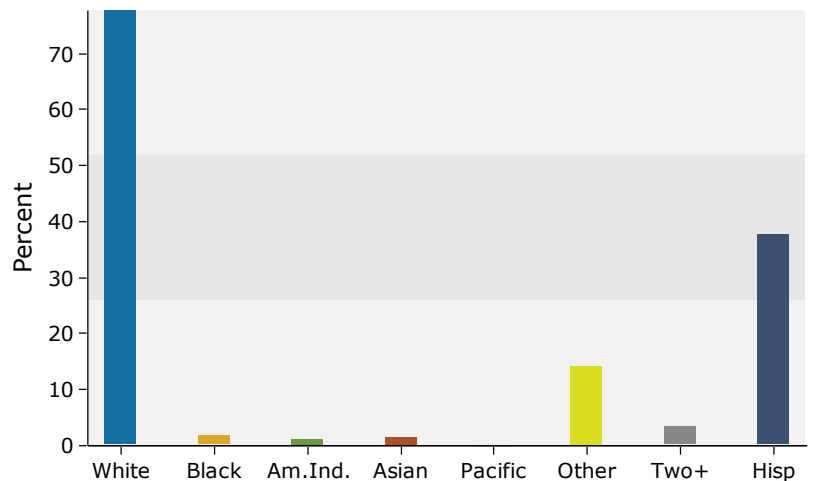
### Population by Age



### 2014 Household Income



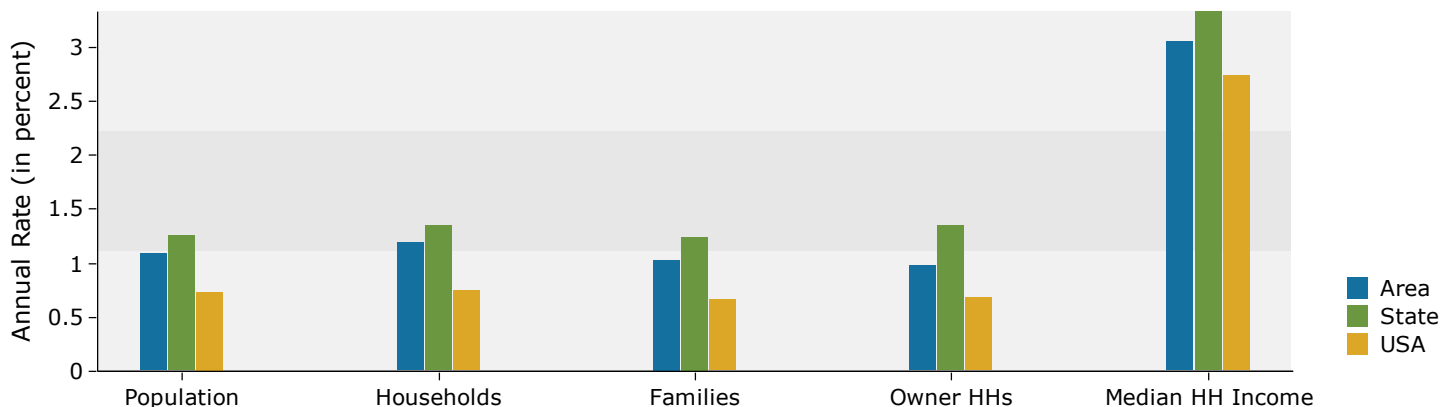
### 2014 Population by Race



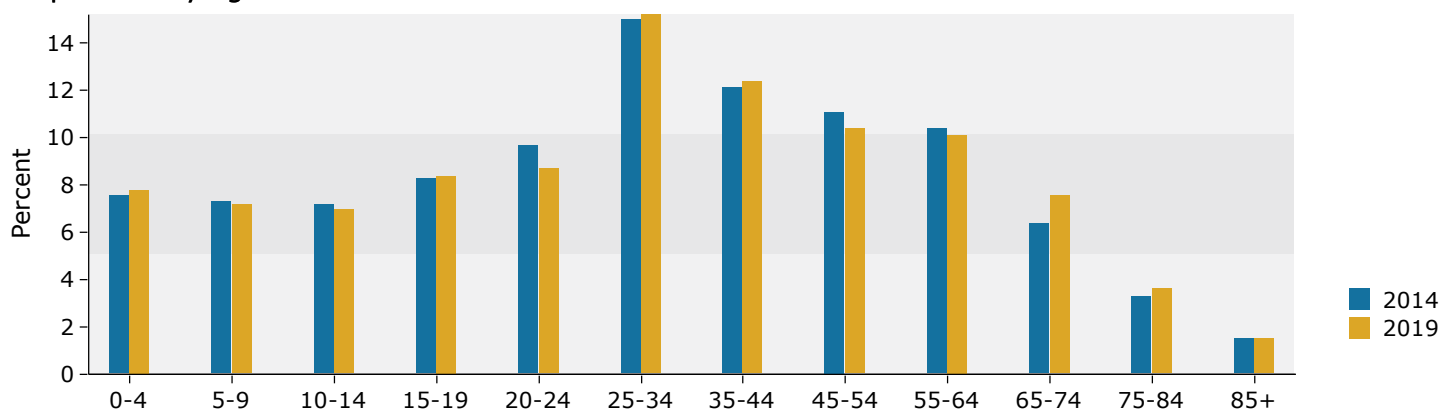
Source: U.S. Census Bureau, Census 2010 Summary File 1. Esri forecasts for 2014 and 2019.

## 10 miles

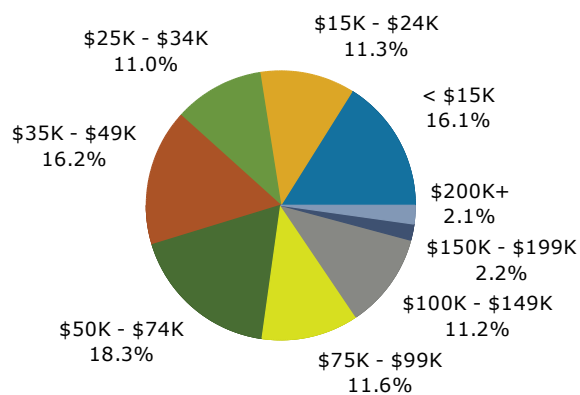
### Trends 2014-2019



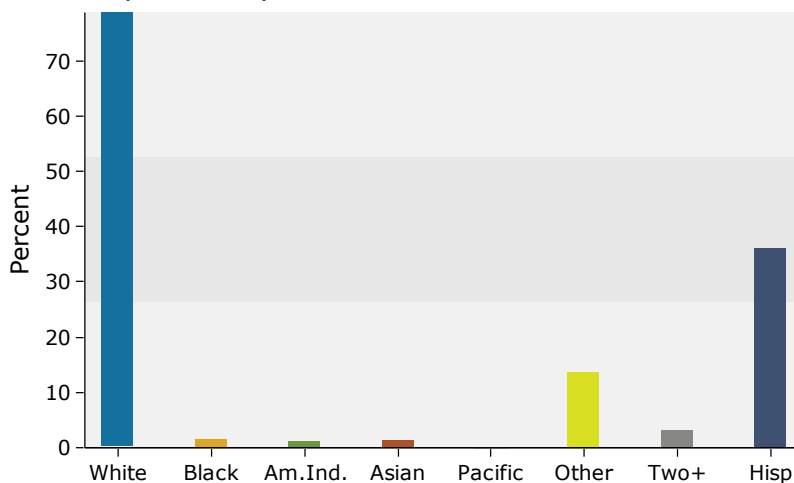
### Population by Age



### 2014 Household Income



### 2014 Population by Race



Source: U.S. Census Bureau, Census 2010 Summary File 1. Esri forecasts for 2014 and 2019.